

What's new in PerfectForms™ v1.12?

Release Date: May 13, 2009

1. Dashboard

Form Data Types Expanded

Delete Actions Require Password Option

Column Widths Remembered

Data History Available from Forms Tree

Modification to Form Permissions

Export Button is Now Migrate Button

Draft Mode: Redirect Notifications to Yourself

Mapping Form Instances: New Options

User Details Now Includes Custom ID Field

Allow/Disallow Basic Users Access to Update Personal Details

Return to Notifications List When Viewing a Form Instance

2. Form Layout & Behaviors

Radio Button Group Attributes Can Be Selected in Behaviors

Obligatory Checks Skipped for Hidden or Disabled Objects

Printing of Table Data

Field States for Table Columns

Show Which User has Locked a Form

Set Table Rows Behavior: New Options

Notifications Can be Sent to Multiple E-mail Addresses in a Table Column

New Button Properties

New Captcha Object

File Attachment Document Types

Fields and Variables Allowed in Notification Subject Line

3. Reporting

Report on Values and Captions of Drop-Down, List and Radio Button Group Objects

Set Filter Options

Clear Filter Behavior

Sort Order in Data List and Data Grid Objects

4. Integration

Connect Command Can Populate Values and Captions

Agent SQL Connection Using schema_name.table_name Identifier

Improved Connection Agent Error Messages

List of Defects Resolved in Version 1.12

1. Dashboard

1.1 Form Data Types Expanded

Export of form response data includes caption and value for drop-down, list and radio button objects.


[Building a Form > Exporting a Form and Form Data](#)

1.2 Delete Actions Require Password Option

Password confirmation is required for all delete options.

[Building a Form > Working with Versions > Deleting all Form Data and Earlier Versions](#)

1.3 Column Widths Remembered

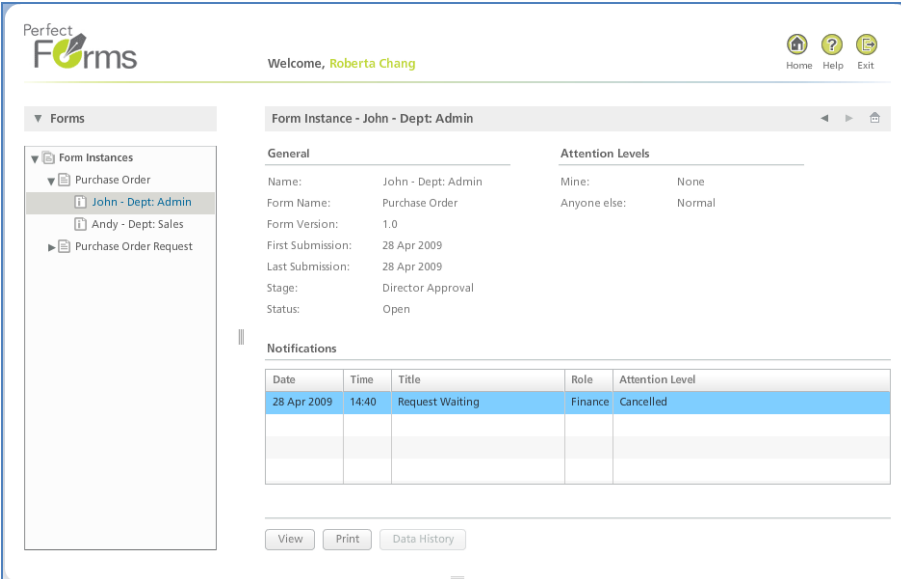
Widths of Dashboard columns are saved if the system is exited correctly using the  icon.

[Navigating PerfectForms™ > Dashboard Options Reference Table](#)

1.4 Data History Available from Forms Tree

The data history now can be accessed from the Forms tree on the dashboard.

Data history can now be accessed from the Forms tree (choose Forms from the dashboard navigation menu). This functionality makes data history available to form users in addition to the form designer. Note that you must grant the Data permission (known in previous versions as Report permission) for the form in order for a user to be able to view the data history. Default permission of World = View does not allow basic users to view the data history.



The screenshot shows the PerfectForms dashboard interface. On the left is a 'Forms' tree with 'Form Instances' expanded, showing 'Purchase Order' with sub-items 'John - Dept: Admin', 'Andy - Dept: Sales', and 'Purchase Order Request'. The main area displays details for 'Form Instance - John - Dept: Admin'. It includes sections for 'General' (Name, Form Name, Form Version, First Submission, Last Submission, Stage, Status) and 'Attention Levels' (Mine, Anyone else). Below is a 'Notifications' table with one entry: '28 Apr 2009 14:40 Request Waiting Finance Cancelled'. At the bottom, there are buttons for 'View', 'Print', and 'Data History', with 'Data History' being disabled.

Date	Time	Title	Role	Attention Level
28 Apr 2009	14:40	Request Waiting	Finance	Cancelled

Screenshot shows a case where the user is not entitled to view data history.

1.5 Modification to Form Permissions

The Report permission has been renamed Data permission and now allows the user to view instances (previously allowed under the Publish permission), as well as allowing a user to select a form as a datasource for reporting.

The Data permission allows the user to view the data history from the Forms view on the dashboard. (See item 2.4.)

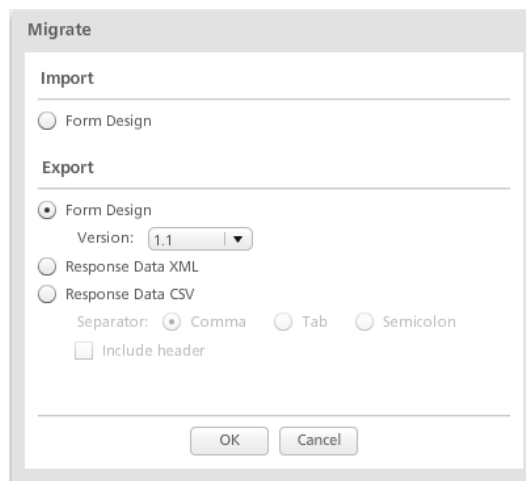
The Publish permission no longer allows the user to view instances.

[Building a Form > Publishing and Deploying Your Form > Granting Form Permissions](#)

1.6 Export Button is Now Migrate Button

The Export button has been renamed Migrate.

You can now import a PerfectForms™ file (formname.pf) into an existing form. It will be imported as a new version and will take the next minor version number. (Example: If latest version is 1.1 then the newly imported form will become version 1.2.)

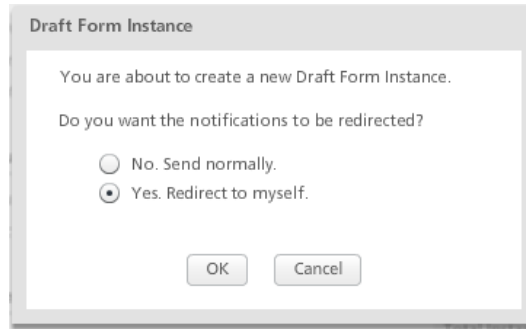


When exporting a form the user may choose which version to export.

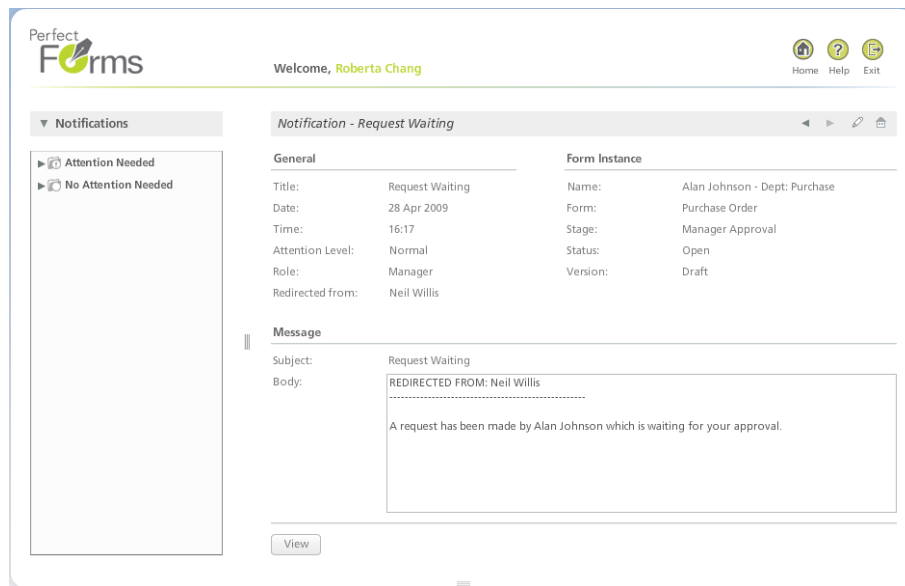
[Building a Form > Exporting a Form and Form Data](#)

1.7 Draft Mode: Redirect Notifications to Yourself

When a new instance is created in draft mode, normally for testing, the form designer may elect to have all notifications sent to themselves rather than to the normal users.



Notifications and e-mails will be redirected to the designer who is testing the form. The notifications and e-mails will show that the form instance has been redirected.

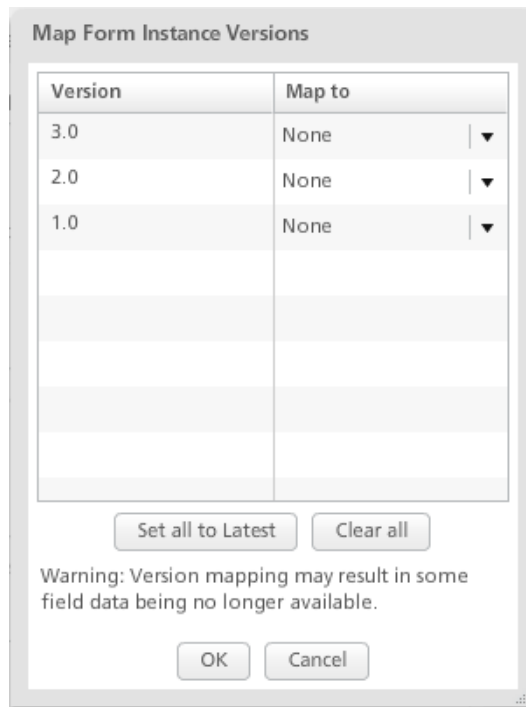


[Building a Form > Publishing and Deploying Your Form > Testing Your Form Using Draft Instances](#)

1.8 Mapping Form Instances: New Options

- Set all to latest.
- Clear all.

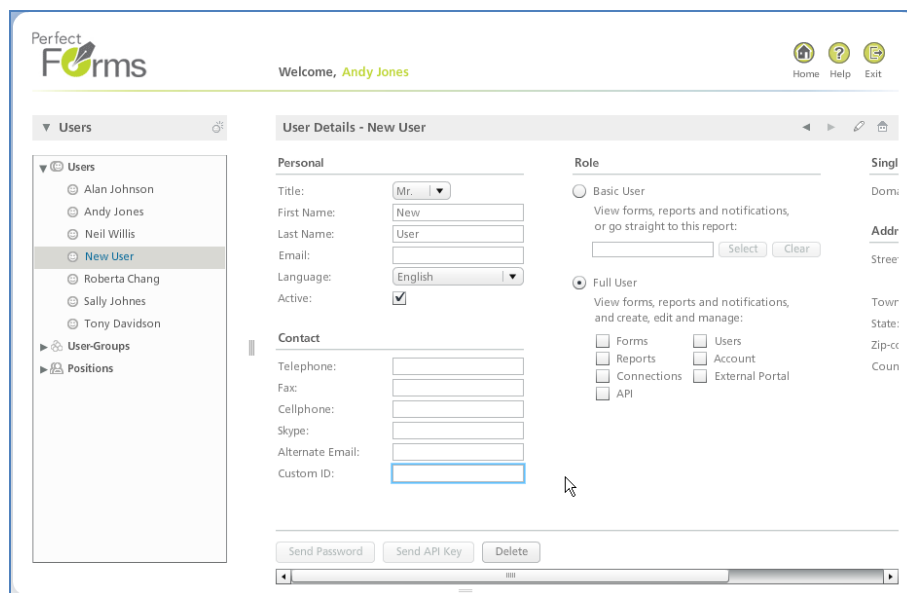
Mapping of instances can now be performed from the Edit Forms tree.



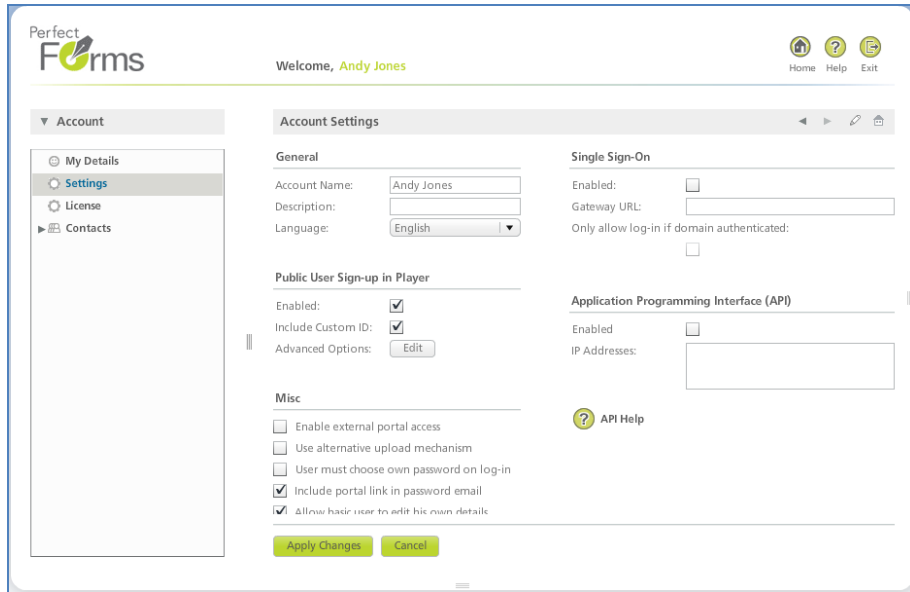
[Building a Form > Working with Versions > Mapping Form Instances to Another Version of the Form](#)

1.9 User Details Now Includes Custom ID Field

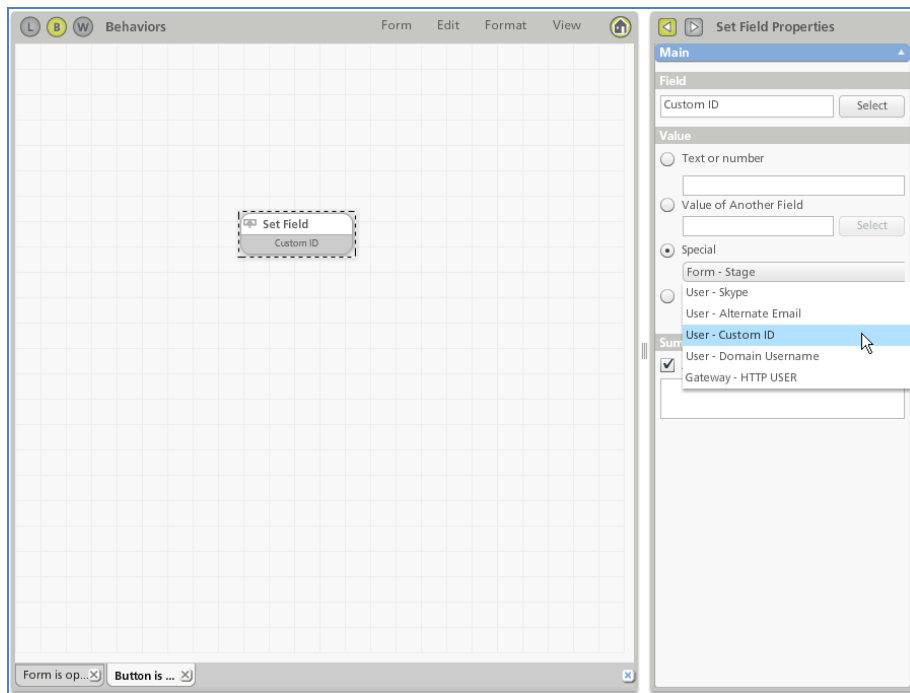
A new field Custom ID has been added to the user details view on the dashboard.



When using the Public User sign-up in Player option, it is possible to select the Custom ID.



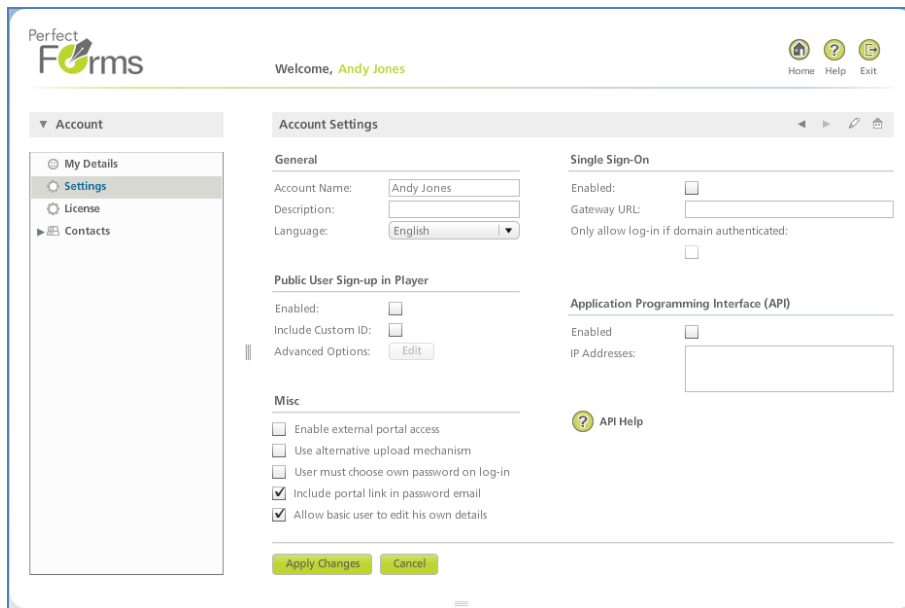
The Custom ID is listed in the Special fields and variables and can be utilized in form behavior.



[Navigating PerfectForms™ > Account](#)

1.10 Allow/Disallow Basic Users Access to Update Personal Details

An administrator now can manage a user setting Allow Basic User to Edit His Own Details. The selection is made in the Account Settings screen.



[Navigating PerfectForms™ > Account](#)

1.11 Return to Notifications List When Viewing a Form Instance

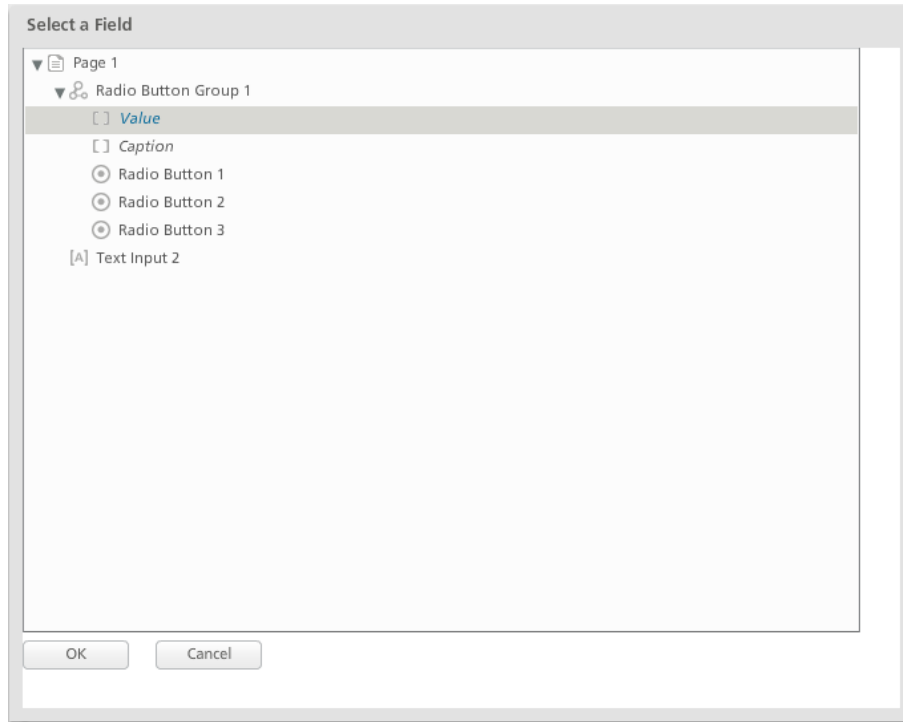
When a form instance is viewed from the notifications list, it first shows the Instance Details screen. Once viewed, the user will be returned to the notification list. Previously, the user was returned to the instance details screen.

[Navigating PerfectForms™ > Notifications Tree View](#)

2. Form Layout & Behaviors

2.1 Radio Button Group Attributes Can Be Selected in Behaviors

Radio button groups have values assigned by default instead of by designer input. In behaviors, it is possible to select either the value or caption of the radio button group.



[Building a Form > Laying Out a Form > Form Objects Reference Table](#)

2.2 Obligatory Checks Skipped for Hidden or Disabled Objects

Hidden or disabled objects are skipped during the obligatory check. This applies both to objects where the Obligatory Answer property is turned on or if the object is included in a Check Obligatory behavior.

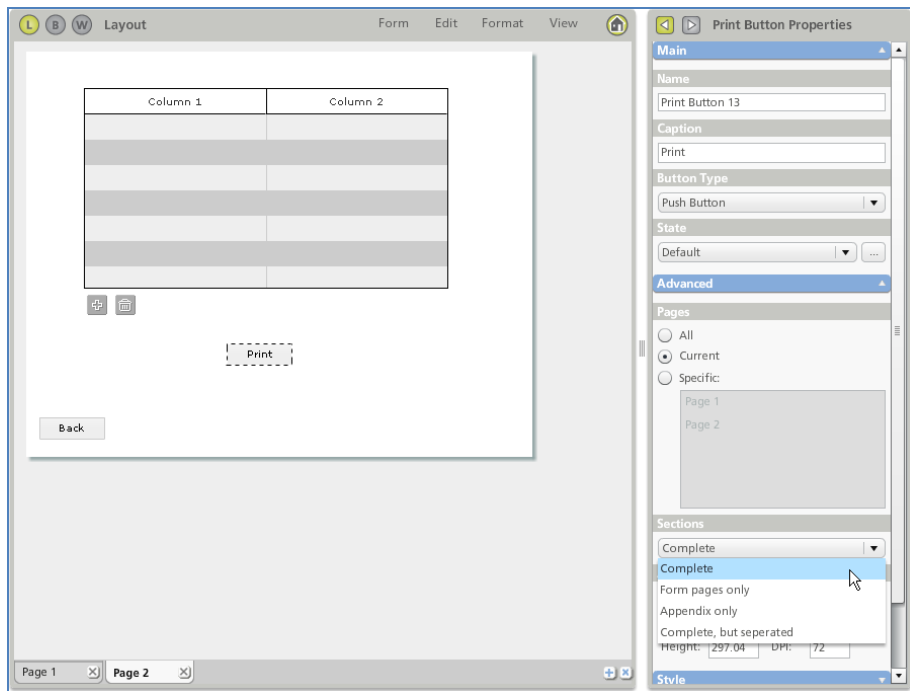
[Building a Form > Adding Behaviors > Behavior Commands Reference Table](#)

[Building a Form > Managing Stage and Role Field Access > Marking as Obligatory](#)

2.3 Printing of Table Data

Data collected in a table, which is not normally all visible onscreen, can be printed in an appendix. The appendix will print in monochrome only with no styles applied but will display all cells. Add a Print Button object or assign a Print behavior command in the form. On the Properties bar, under the Advanced properties, the Sections drop-down includes the following options:

- Complete. Creates one .PDF file containing the form pages and appendix.
- Form pages only
- Appendix only
- Complete but separated. Creates two separate .PDF files, one for form pages and one for the appendix.

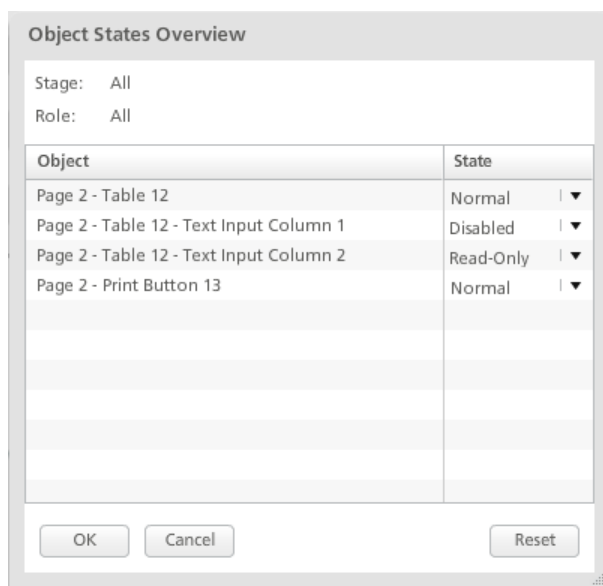


The appendix size can be specified in the Print Button object or Print behavior properties.

[Building a Form > Laying Out a Form > Working with Tables > Printing Table Contents](#)

2.4 Field States for Table Columns

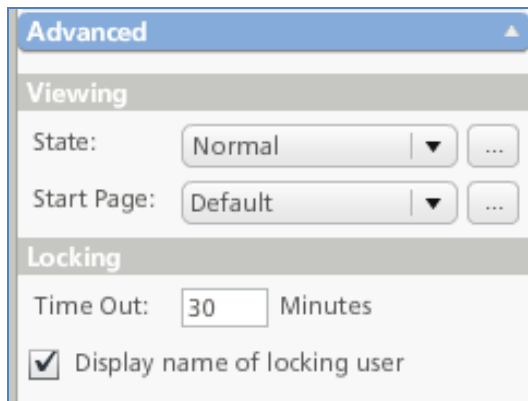
Table columns can now be modified in the Object States Overview dialog.



[Building a Form > Laying Out a Form > Working with Tables > Working with Columns](#)

2.5 Show Which User has Locked a Form

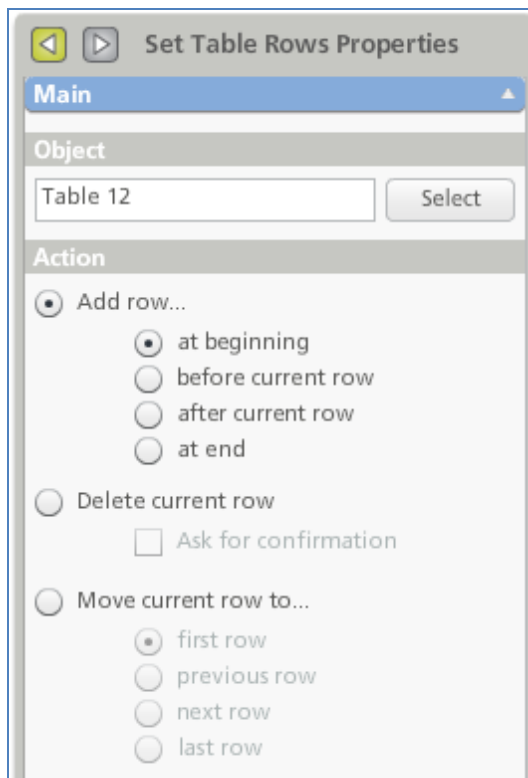
In Advanced Form Properties, the designer may choose to allow this option.



[Building a Form > Laying Out a Form](#)

2.6 Set Table Rows Behavior: New Options

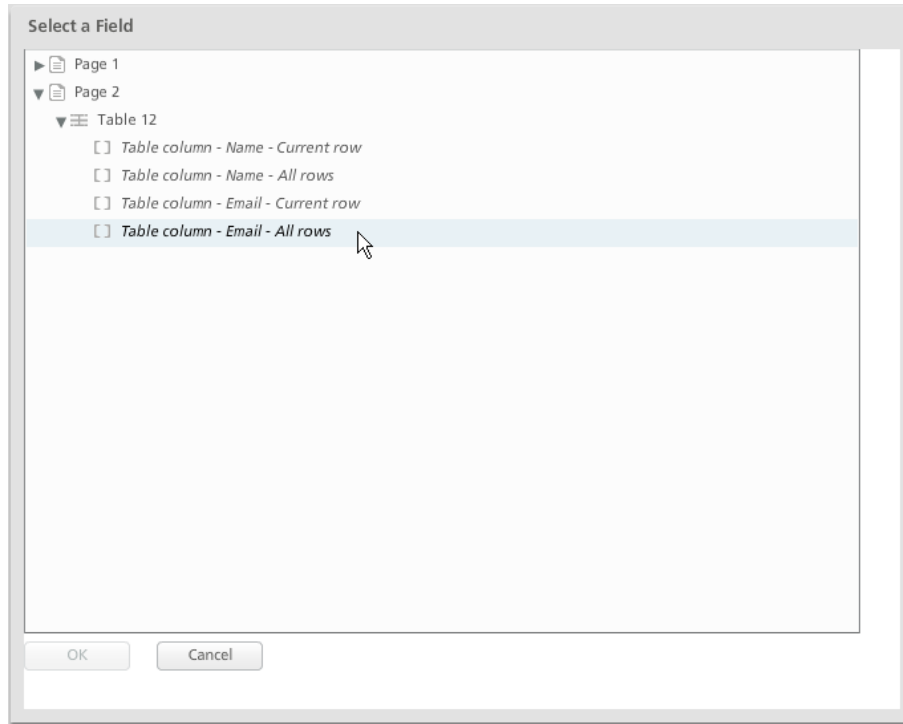
The option to add row At Current Row has been replaced with two options: Add row Before Current Row and After Current Row.



[Building a Form > Adding Behaviors > Behavior Commands Reference Table](#)

2.7 Notifications Can be Sent to Multiple E-mail Addresses in a Table Column

In the Persons tab of the Notify command dialog, the option Email Taken From a Field includes the option to select All Rows of a table column containing e-mail addresses.

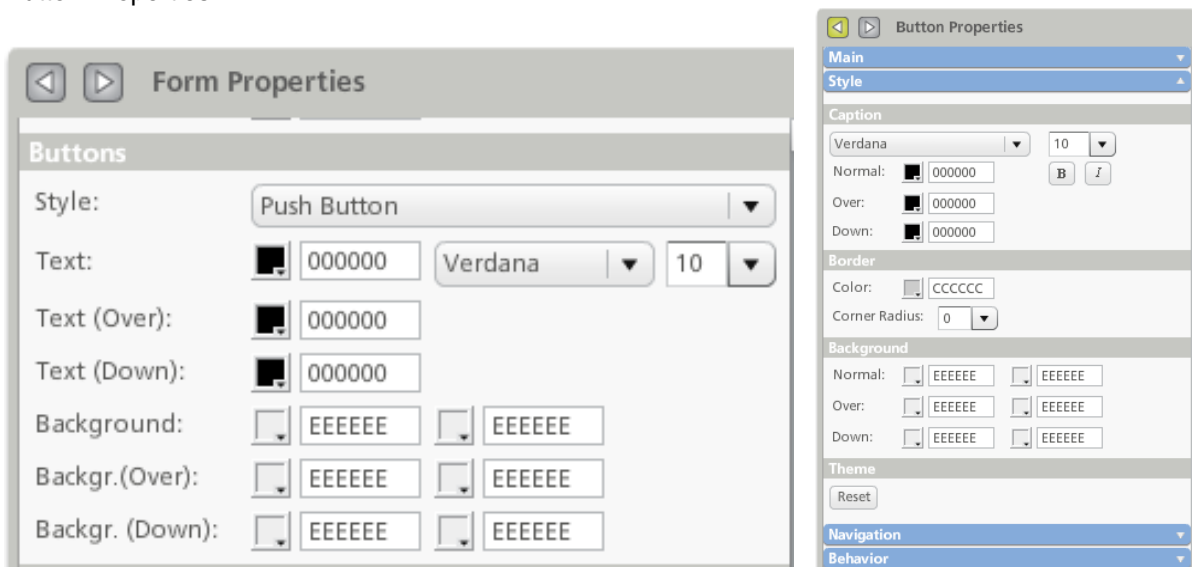


[Building a Form > Laying Out a Form > Working with Tables > Working with Columns](#)

2.8 New Button Properties

Button Properties now include options to apply different text and background colors for when a button is displayed normally (Normal), when the mouse is moved over the button (Over) and when the button is clicked (Down).

The selections can be made in Form Properties under the Themes section and also on the individual Button Properties.



[Building a Form > Laying Out a Form > Form Objects Reference Table](#)

2.9 New Captcha Object

A new Captcha object now is included in the Advanced Visuals section of the Form Layout Toolbox.

The object will present a random set of characters in a distorted format, requiring the user to enter the correct sequence of characters.

The object character length can be set in the Properties bar along with Style and Navigation. The Captcha object is not included in the Form Properties under the Theme section so properties may only be set in the object properties itself.

The text of the Captcha object can be interrogated using behaviors.

[Building a Form > Laying Out a Form > Form Objects Reference Table](#)

2.10 File Attachment Document Types

The document types .DOCX and .XSLX have been added.

[Building a Form > Laying Out a Form > Form Objects Reference Table](#)

2.11 Fields and Variables Allowed in Notification Subject Line

Form parameters can be inserted into the Subject field of the notification e-mail.

[Building a Form > Setting Notifications, Reminders, Escalations > Notify Command - Message Tab](#)

3. Reporting

3.1 Report on Values and Captions of Drop-Down, List and Radio Button Group Objects

Note: This is not backward compatible; any forms created in a previous version will need to be re-published.

The screenshot shows a dialog box titled "Data-Source". It contains the following fields and controls:

- Name: Test Form 12
- Form: Test Form 12 (with a "Select" button)
- Fields: A table with columns "Name" and "Disp".
- Filter: No filter (with "Edit" and "Clear" buttons)
- Notes: An empty text area.
- Buttons: "Select all", "Clear all", "Refresh", "OK", and "Cancel".

	Name	Disp
<input checked="" type="checkbox"/>	Page 1 - Radio Button Group 1 - Caption	
<input checked="" type="checkbox"/>	Page 1 - Radio Button Group 1 - Radio Button 1	
<input checked="" type="checkbox"/>	Page 1 - Radio Button Group 1 - Radio Button 2	
<input checked="" type="checkbox"/>	Page 1 - Radio Button Group 1 - Radio Button 3	
<input checked="" type="checkbox"/>	Page 1 - Radio Button Group 1 - Value	
<input checked="" type="checkbox"/>	Page 1 - Text Input 2	
<input type="checkbox"/>	Meta - Instance ID	
<input type="checkbox"/>	Meta - Instance Name	
<input checked="" type="checkbox"/>	Meta - Instance Number	
<input type="checkbox"/>	Meta - Last Submission Date	

3.2 Set Filter Options

New logical operators are included that can return Boolean values. You can set value to a checkbox based on a condition.

3.3 Clear Filter Behavior

A Clear Filter behavior is added which performs the same task as the Clear Filter button.

3.4 Sort Order in Data List and Data Grid Objects

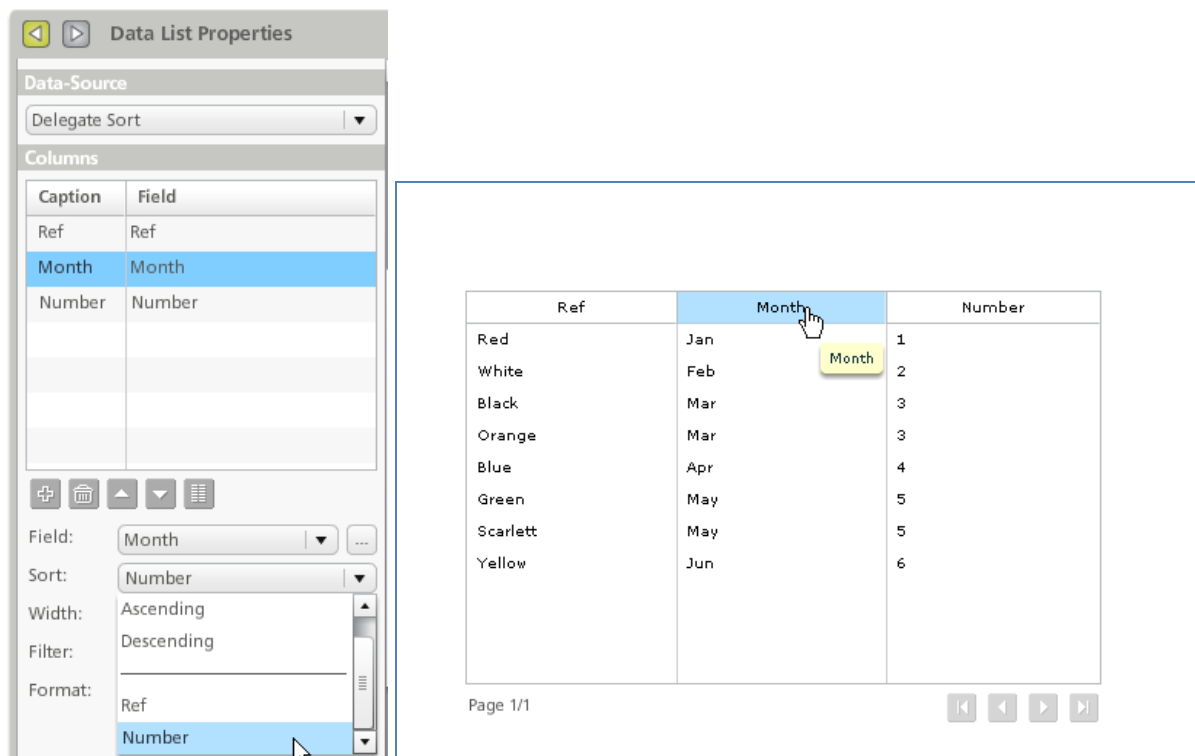
A report designer can delegate sorting of a column in a Data List or Grid to another column.

Example: A form is collecting Month data from a drop down, list or radio button group. The data pairs in the object are: 'Jan | 1', 'Feb | 2', 'Mar | 3', 'Apr | 4' and so on.

In the report Data List, you have a column for Month (Caption of list) and a column for the Month Number (Value of list).

In the Month Number column, select the Sort as Ascending and, in the Month column, select to delegate the sort to the Month Number column.

When you click on the Month column header, it will sort in the expected manner: January, February, March ... etc. based on the value in the number column and not alphabetically based on the text in that column.

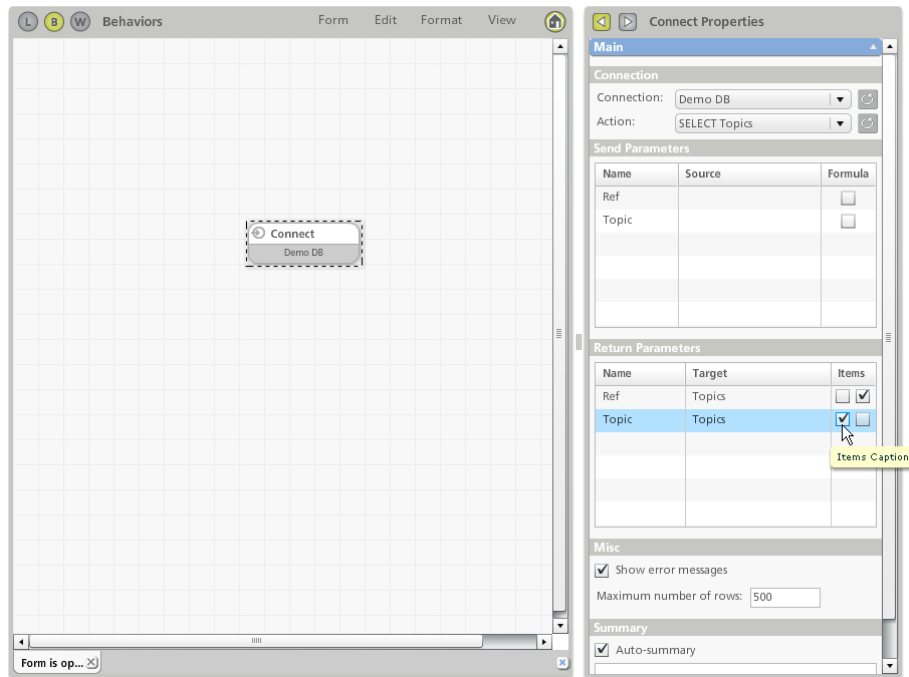


4. Integration

4.1 Connect Command Can Populate Values and Captions

The Connect command will have two checkboxes in the Return Parameters Items column. The left checkbox is selected to populate the caption and the right checkbox can be selected to populate the value.

For existing forms the default setting will be both checkboxes selected.



[Administering and Integrating PerfectForms™ > Administering Connections and Integration > Calling the Connection Action from a Form](#)

4.2 Agent SQL Connection Using schema_name.table_name Identifier

If two tables exist with the same name but different schema names (Example: dbo.table and frm.table), it will be possible to make a connection to either table. (Previously the schema name was not considered and only the first table would be available.)

[Administering and Integrating PerfectForms™ > Administering Connections and Integration > Creating PerfectForms™ Connections > Database Connections](#)

4.3 Improved Connection Agent Error Messages

The full agent error message will be returned to the user when testing or initiating a connection.

[Administering and Integrating PerfectForms™ > Administering Connections and Integration > Connection Error Handling](#)

List of Defects Resolved in Version 1.12

Number	Defect Description
199	Drop-downs populated from the connections do not keep data if they are set to empty on close.
87	Basic User Limit Reached notification is sent for advanced users too. The user should not be created before all options are selected.
96	Assigning a numeric value to a time input table column is not working.
102	The message box stating that there is no selected field for a report doesn't display more than one name without scrolling.
103	If I have two roles on a workflow form and the form is being accessed from a report, only the first role will be active.
117	Value object: When you select a format then go to Home page and choose Edit again, then the default label is changing.
162	In PDF transfer, the vertical separator is moved a couple of pixels from the original position.
165	If the same user is assigned for two different roles, when you open an instance from a meta-link, you should have the option to chose between those roles.
173	Background image tiled on Page and Group is showing as stretched.
175	Reporting: Translation error: \$\$\$\$server_error_132
176	When a datasource filter is set to (), you can't preview the report.
181	In Design mode, states of table columns are not updated when the stage role is changed from the States and Obligatory dialog.
7	Table field types Time Input, Drop-Down, Date don't have read-only state available.
10	File attachment and File Import have the same behavior in the disabled state as in read-only state.
215	Form can't be submitted if you put a Submit Data command after a Show Form command.
234	The layer order of copied objects (multiple objects copied at the same time) is not correctly assigned.
235	Reporting: Translation error \$\$\$\$server_error_158 is received when using an illogical filter for a datasource.
236	Datasource filter panel: Cancel button is not working.
244	Sign-up for a New Account: Translation error when entering an invalid e-mail address.
253	Account/Contacts: Translation error after entering an invalid e-mail address.
254	Flash player incurs an error when performing copy/paste of a group with a file attachment in it.
255	Radius for group objects doesn't look as it does for other objects.
256	Group Transparency property set from Themes is also applied to the Page object.
273	Some of the borders of a table don't show in PDF.
274	The Date Input object doesn't show in PDF if it's left empty.

- 276 User with View rights can't log in from forms link (without reloading), if an existing user (without View rights) tried before.
- 293 Push button type property has the same color for second gradient as the mouse-over text.
- 294 Must be answered or Check obligatory properties don't work for a File Attachment object.
- 296 Incorrect message is received when a user tries to edit a report that is already edited by another user.
- 313 Shortcut keys are not working when the application is running in IE 8.
- 319 Date anomalies occur in reports when viewed by different users.
- 341 Close Command Properties window: Redirect to URL property can be selected but there is no way you can specify a URL.
- 342 When file attachment is left empty, system errors are generated in Form Read actions and reporting.
- 358 If you have a Data List that displays a picture (file attachment), when you click on it, a Flash player error is incurred.
- 370 Data List and Data Grid: When you navigate between pages, the Export button becomes disabled.
- 385 GetUsersDetails brings details of logged user regardless of the User ID inserted.
- 393 The value of a Time Input column in a Table changes in PDF if at least one row is left empty.
- 394 The value of a Numeric Input changes in PDF.
- 395 The actual value of a Password Input is shown in PDF.
- 440 Read-only mode makes label type objects, pictures, and tables visible and read-only if they were hidden previously but they should remain hidden.
- 441 Sometimes form loading hangs at 97% or 98% when loaded from a Data List link.
- 446 The account settings are not saved if the SSO Gateway is in use unless the user exits and logs into the application.
- 454 New User: E-mail address restricted.